



SERVING MEDICAL DEVICE INDUSTRY WITH METROLOGY INNOVATION



Quality Inspection

We supply state-of-the-art metrology technology allowing you to collect precise & reliable data in digital formats.



Manufacturing Efficiency

We help you integrate optical metrology & automation solutions into your processes to help you save money & time.



Metrology Services

We provide quality inspection, 3D measurement, laser tracking & reverse engineering services on a project basis.



Success Stories



ATOS Q USED FOR MEDICAL DEVICE INSPECTION AT INVETECH

Invetech purchased an ATOS Q industrial metrology system for use in design, reverse engineering & quality inspection applications for medical device components.

MEDICAL DEVICE COMPONENT QUALITY INSPECTION SERVICES



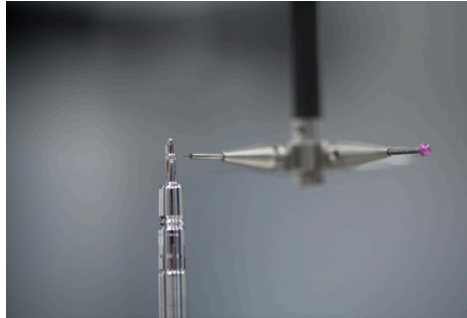
Scan-Xpress has completed numerous medical device industry 3D scanning, quality inspection & reverse engineering service contracts for companies such as **Fisher & Paykel**, **MAXONIQ** & **Cochlear**. Our Team is well-versed with plastics manufacturing & engineering requirements.

Products & Services



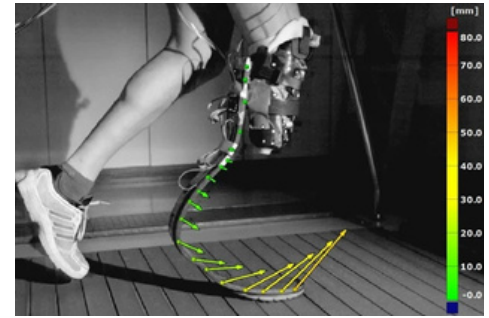
ZEISS Optical Metrology

German built optical sensors help users to cut down inspection times whilst improving product quality.



ZEISS Industrial Metrology

Best-in-class range of CMMs, optical & CT metrology help users to meet strict medical industry standards & tolerances.



Metrology for Biomechanics

Perform material tests & motion analysis for prosthetic design & load testing applications.

Applications



Medical Device Quality Inspection

Utilise 3D metrology to measure & analyse parts in a sterile environment; perform GD&T, surface defect & tolerance checks

- Measure medical components in-line or in a sterile environment;
- Perform quality inspection on orthopaedics & medical implants;
- Integrate QA tools made for medical plastic injection parts.



Materials Testing & Motion Analysis

Utilise 3D camera systems & digital image correlation software to perform R&D & testing for orthopaedics & biomechanics applications

- Capture accurate 3D data using ARAMIS & ZEISS Correlate DIC systems;
- Perform material stress/strain, loading & deformation testing;
- Analyse motion & deformation of prosthetics & orthopaedic implants.



Specialised Tools for Plastic Injection Moulding

ZEISS Metrology provide plastic industry specific solutions that will help you streamline your processes & improve quality

- Eliminate complex fixturing by De-Warp virtual warpage compensation;
- Inspect internal defects using ZEISS X-RAY & CT metrology solutions;
- Optimise tool correction process with ZEISS Tool Correct Software.

SCAN-XPRESS
EXCELLENCE IN 3D MEASUREMENT



Call: 1300 3D SCAN
(1300.337.226)

Email:
info@scan-xpress.com.au

Download for FREE:
ZEISS INSPECT
Parametric Inspection
& Analysis Software



EXCLUSIVE
Distributor of:



#HandsOnMetrology
PARTNER



Certified
Metrology Partner